

Colour Sheet-Fed Printer

RICOH Pro C9200 SERIES Graphic Arts Edition

Printer

RICOH
imagine. change.



RICOH
Pro C9200

115
ppm
Black & White
Full Colour

RICOH
Pro C9210

135
ppm
Black & White
Full Colour

A tailored solution to meet the needs of the even most demanding production environments

The digital press you choose should offer certain threshold capabilities to ensure success: quality comparable to offset, high reliability for long runs, generous paper capacity, expansive media support and ease of use. Get all this and more with the RICOH Pro C9200/C9210 Colour Sheet-Fed Printers. Commercial printers, service bureaus and enterprise in-plant operations can migrate offset jobs to digital confidently, expand offerings and pursue new applications. You'll maximize your profitability and return on investment (ROI) by:

- Delivering consistent, repeatable, superb colour and image quality
- Producing long runs efficiently and cost effectively
- Developing new, high-margin applications using diverse sizes and types of media
- Maximizing uptime and asset utilization with advanced automation and usability
- Being prepared for changing market conditions and customer requirements



Achieve your digital objectives faster, better and with innovation

- 1 Saddle stitch booklet finishing and 100-sheet stapling are done with the SR5060 Booklet Finisher.** Additional commercial finishing options are also available.
- 2 Keep jobs running continually with the High Capacity Stacker SK5040.** Up to 5,000 sheets can be stacked and moved with the Roll Away Cart. Up to two Stackers can be configured in one system.
- 3 Diagnose colour automatically.** An in-line sensor ensures real-time colour adjustment and correction during printing.
- 4 Maintain image gradation quality.** The Image Calibration System scans image density to make any necessary corrections prior to printing.
- 5 Register images front to back automatically.** An in-line sensor provides the data used by the system to adjust image position and shape.



6 Expand your offerings with oversize printing. Oversize sheet printing capabilities allow you to print up to 1,260mm simplex and 1,030mm duplex.

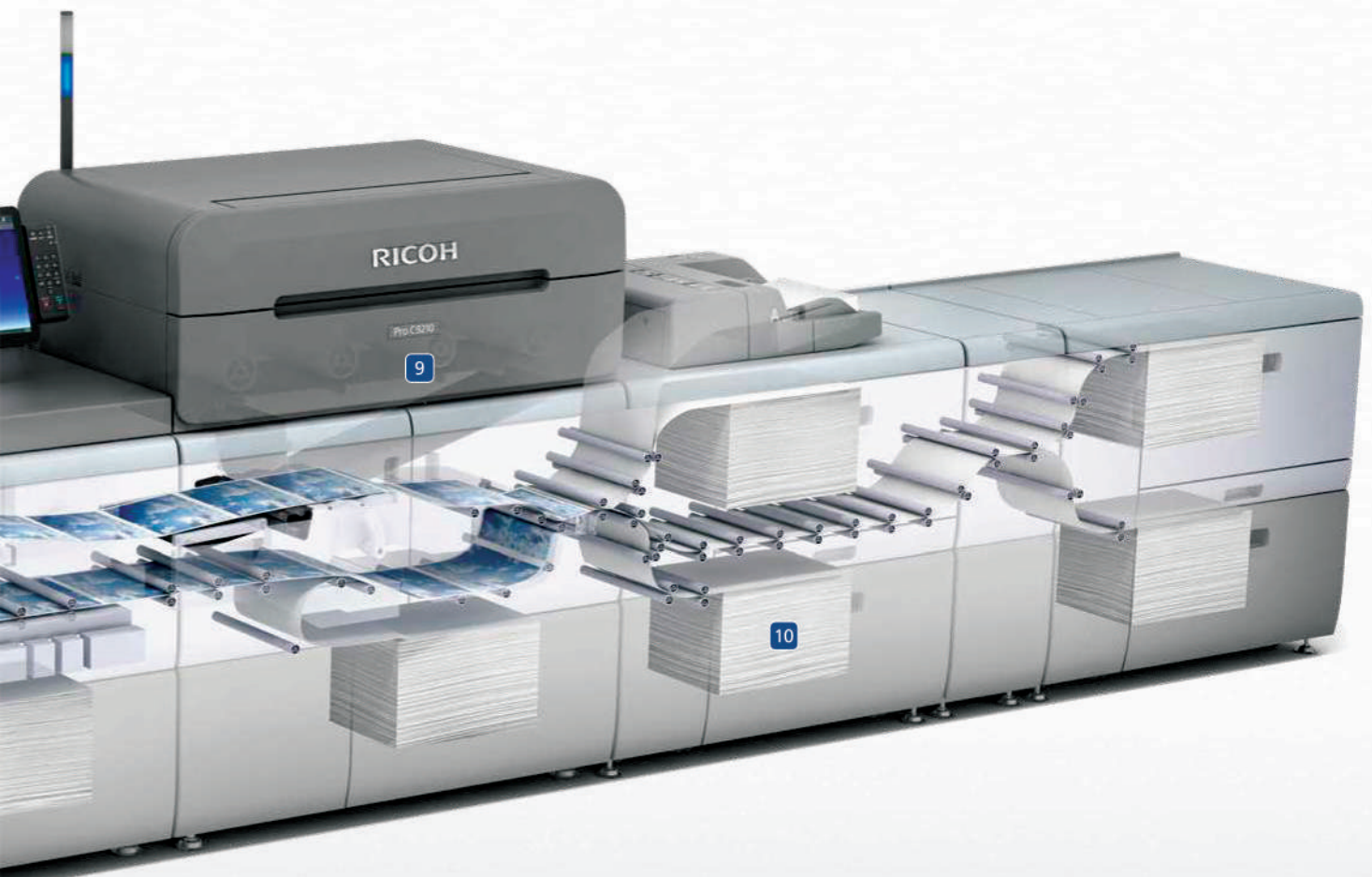
7 Increase operator productivity. Each operator can customize the new 17" Smart Operation Panel, which displays the entire device configuration.

8 Expedite media selection. The enhanced graphical Media Library lets you easily create paper settings and select desired papers.

9 Deliver superb quality. VCSEL laser beam technology and 2400 x 4800 dpi print laser resolution provide output that compares favorably with offset.

10 Vacuum Feed Trays ensure the paper feeding ability of Coated Media up to 470 gsm maximum. Up to 3 Units can be added to increase the feeding capacity to 18,100 sheets.

Set up jobs fast and accurately. Using the new Media Management Tool, operators can share the media catalog among multiple Pro C9200/C9210 digital presses (not shown).

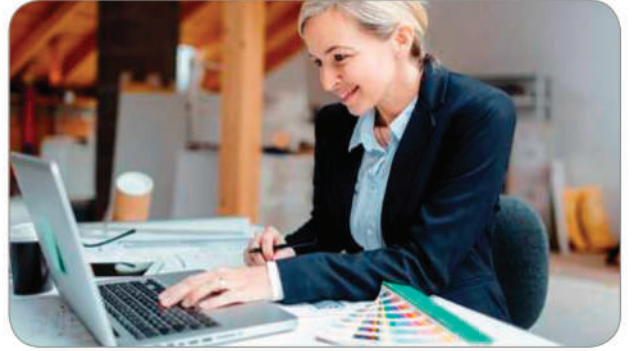


RICOH Pro C9200/C9210

Keep up with changing marketplace and customer requirements

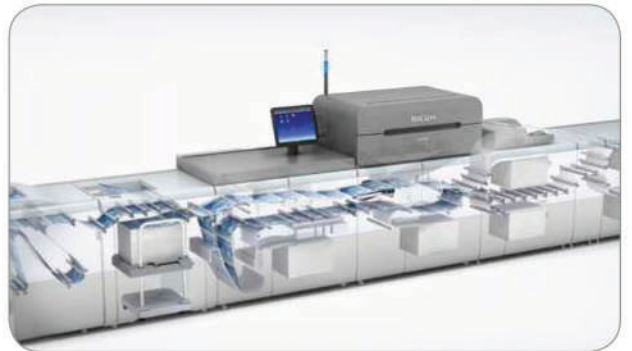
Choose a digital solution that supports your growth and agility

You never know when market conditions or customer requirements might change. Prepare for the future and protect your investment with the Pro C9200/C9210, which enables you to manage information with the utmost agility. Take advantage of powerful variable data processing (VDP) capabilities to personalize, version and otherwise customize materials. Build on basic colour management capabilities with industry standards, calibration methods and G7 certification. Increase efficiency and accuracy with the RICOH TotalFlow Suite of software, which automates and streamlines tasks related to makeready, ticketing, scheduling, creating workflows, reporting and more. With a flexible, scalable digital print solution that allows you to connect up to 15 sheet-fed printers, you can pursue ambitious growth plans.



Count on exceptional reliability for long uninterrupted runs

Our printers are designed to maintain their rated speeds of 115 and 135 pages per minute, regardless of paper weight up to 470 gsm. The data transfer unit delivers high transfer speeds with real-time, bidirectional image data transfer between the Pro C9200/C9210 mainframes and controllers. Data transfer capacity is increased to support oversize sheet materials up to 1,260mm. New swing-and-shift technology reads a paper side edge instead of the leading edge to achieve registration accuracy with paper of varying sizes. An in-line sensor scans each sheet, including image length, before and during printing. With many variables controlled automatically, long runs are simple and straightforward.



Thrive now and in the future with the right vendor partner

You work hard to ensure your success and profitability, and so do we. Our consultants can assess your business, your marketplace and opportunities before giving you objective recommendations based on decades of experience and insights into industry trends. In virtually any environment, our professional services team can customize and integrate your digital print solution. Technical support up to 24x7 is just a click or call away when you need it. A nationwide parts network assures ready availability of spares to support our technicians and the TCRU program. RICOH @ Remote can help maximize uptime with remote diagnosis, software upgrades and more. With people, processes and technology backing you up, you can feel confident that your investment and your future are in good hands.



RICOH Pro C9200 / C9210

MAIN SPECIFICATIONS

GENERAL	
Model Name:	Pro C9200, Pro C9210
Technology:	4-drum dry electrostatic transfer system with internal transfer belt
Fusing:	Oil-less, belt fusing method
Print Speed:	Pro C9200 - 115ppm Pro C9210 - 135ppm
Laser Resolution:	Max: 2400 x 4800dpi
Warm Up Time:	Less than 540 seconds
Dimension (WxDxH):	Pro C9200 & Pro C9210 - 2,520 x 990 x 1,500mm
Weight:	Pro C9200 & Pro C9210 - Less Than 1076Kg
Power Source:	220-240V, 32A x 2 50/60Hz
Power Consumption:	Less than 9,000W
Life:	60,000,000 A4 pages or 5 years
MEDIA HANDLING	
Paper Input Capacity:	1st Tray (std) 2200 sheets 2nd Tray (std) 2200 sheets Optional: Vacuum Feed LCT 3rd Tray: 2,200 sheets 4th Tray: 2,200 sheets 5th Tray: 2,200 sheets 6th Tray: 2,200 sheets 7th Tray: 2,200 sheets 8th Tray: 2,200 sheets Optional: Bypass Tray 500 sheets
Paper Weights:	1st Tray: 52 - 470gsm 2nd Tray: 52 - 470gsm 3rd Tray: 52 - 470gsm 4th Tray: 52 - 470gsm 5th Tray: 52 - 400gsm 6th Tray: 52 - 400gsm 7th Tray: 52 - 400gsm 8th Tray: 52 - 400gsm Optional: Vacuum feed LCT 3rd-4th Tray: 52 - 470gsm 5th-8th Tray: 52 - 400gsm
Maximum Media Thickness:	600µm Optional: Bypass Tray 52 - 216gsm 52 - 470gsm
Duplex:	
Maximum Printable Area:	326 x 1255mm (when using optional banner sheet tray)
DIGITAL FRONT ENDS	
E-45	
Configuration:	Optional: External
System Version:	Fiery System FS300 Pro
CPU:	Intel i5-6500 (3.2GHz up to 3.6GHz with Turbo) 8GB (4GB x 2)
Memory:	1TB
HDD:	Support DVD RW Drive
CD-Rom Drive:	
Operating System:	Windows 10 Enterprise Systems x64
E-85	
Configuration:	Optional: External
System Version:	Fiery System FS300 Pro
CPU:	Intel Xeon E5-2637 V4 (3.5GHz with 3.7GHz Turbo) 16GB (4GB x 4)
Memory:	500GB + 2 x 2TB SATA RAID 0
HDD:	Support DVD RW Drive
CD-Rom Drive:	
Operating System:	Windows 10 Enterprise Systems x64
TotalFlow Print Server R-62	
Configuration:	Optional: External
CPU:	6th Gen Core i7 - 6700 3.4GHz
Memory:	Standard: 32GB (16GB x 2) Optional: 32GB (16GB x 2)
HDD:	Standard: 1TB SATA x 3 Optional: 1TB x 1
CD-Rom Drive:	Support DVD Drive
Operating System:	Linux
OTHER OPTIONS	
Vacuum Feed LCT (RT5120), Bridge Unit (BU5010), Multi Bypass Tray (BY5020), Multi Bypass Banner Sheet Tray, Vacuum Feed Banner Tray, BDT Banner Sheet LCT, Staple Finisher (SR5050), Booklet Finisher (SR5060), Front Edge Trimmer (TR5040), High Capacity Stacker (SK5040), High Capacity Interposer Tray (HCI3500), Ring Binder (RB5020), Perfect Binder (GB5010), Multi Folding Unit (FD5020), 2-4 Hole Punch units, GBC StreamPunch, GBC StreamWire, Plockmatic Booklet Maker, Plockmatic Banner Sheet Stacker Tray.	
WORKFLOW SOLUTIONS	
Ricoh TotalFlow Prep, Ricoh TotalFlow Production Manager, Ricoh ProcessDirector, Ricoh TotalFlow BatchBuilder, FusionPro VDP Suite, EFI: Digital StoreFront, Color Profiler Suite, Graphic Arts Premium Package, Impose, Compose, Fiery Central OL Connect Suite, CGS ORIS Lynx & PressMatcher.	

RICOH
imagine. change.



PT. PERDANA BANGUN PUSAKA Tbk

Address : Gedung Konica Lt. 1
Jl. Gunung Sahari Raya No. 78
Jakarta Pusat 10610 - INDONESIA
Email : info@ricoh.perdanagroup.id
Website : ricoh.perdanagroup.id

Kantor Cabang

BANDUNG
Jl. Batununggal IV No. 29
Bandung 40266
Phone : (022) 7510509

SEMARANG
Kompleks Perum Ruko Puri Anjasmoro
Blok DD 1/2
Semarang 50144
Phone (024) 7600335

SURABAYA
Jl. Raya Kenjeran No. 471 - 473
Surabaya 60134
Phone (031) 3890389

PALEMBANG
Jl. Kol.H.Burlian No. 1008 - 1010
Palembang 30961
Phone (0711) 416576

Hubungi Kami :

ENVIRONMENTAL INFORMATION
Pro C9200 Series models comply with the Energy Star 2.0 standards.

Please Note: Unless stated otherwise the data used in this brochure is based on A4 80gsm standard media.

For availability of models, optional apparatus and software, please contact your local Ricoh representative.